

Advanced Power Server (APS)



Intelligently dispatch multiple turbines as a single power source

- Automatically controls up to forty-five C65/ C200/ C1000 Microturbines (max ten C1000)
- Flexible pre-engineered package
- Maximize Microturbine array efficiency
- Reduce maintenance costs with Run Time Balance
- Interface with supervisory systems via ModBus
- Full-featured, touch screen HMI
- Up to five Groups Grid Connect



Advanced Power Server

Reduce System Upgrade Costs

- Full-featured HMI-based control system with touchscreen and PLC
- Run units in a number of preset power dispatch modes
- PLC can be used for balance of plant control
- Avoid control system costs for development and integration of common control schemes

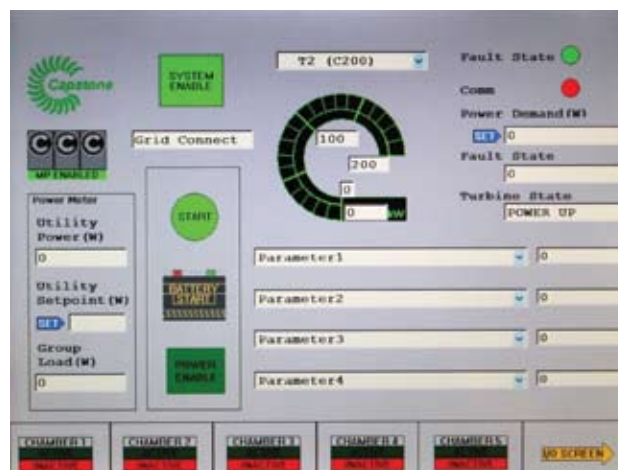
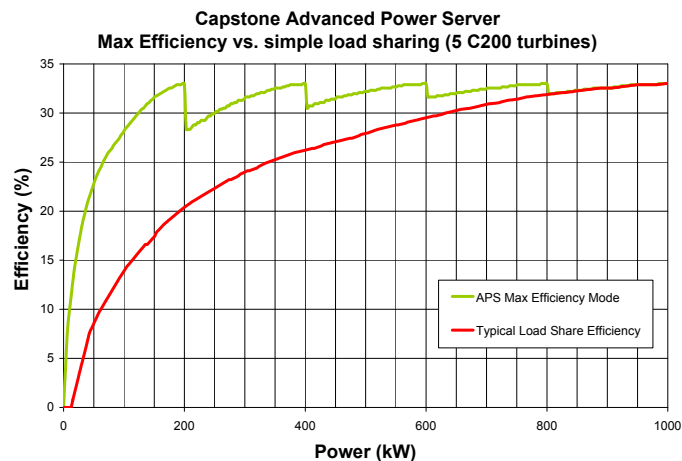
Low Maintenance System

- Easy to use control screens reduce training
- Integrate for remote control or monitoring
- Align scheduled maintenance needs with "run time balance" feature – Microturbine operating hours are equalized to maintain service intervals
- Remote, continuous and secure monitoring by Capstone Service Network maximizes uptime, schedules service and tracks performance data

Reliable power when and where you need it. Clean and simple.

Intelligent Power Dispatch Modes

- “Max Efficiency” feature ensures greatest electrical efficiency is reached through intelligent allocation of power demand to individual Microturbines
- N+1 redundant configurations operate with same efficiency as non-redundant systems while providing full power requirements – even if Microturbine fails
- “Spinning Reserve” feature ensures sufficient overhead exists for your application’s expected transient needs – all while optimizing the efficiency of your stand-alone installation
- Fully compatible with dual mode systems for standby power
- Allows thermal priority for heat recovery applications
- Change power dispatch modes locally or remotely
- Base Microturbine use on utility pricing or time of day – only run when economically feasible



Touch-screen HMI

